

CHANN

— THE RIVERSIDE —  
BOROMMARATCHACHONNANI

## Life with the River

Where life flows with the rhythm of the Tha Chin River—a private retreat embraced by the peace, beauty, and comfort of nature. More than a home, it's a timeless





## Life with Breath

Embrace the breeze of nature—breathe more freely, more fully, and more deeply than ever before.

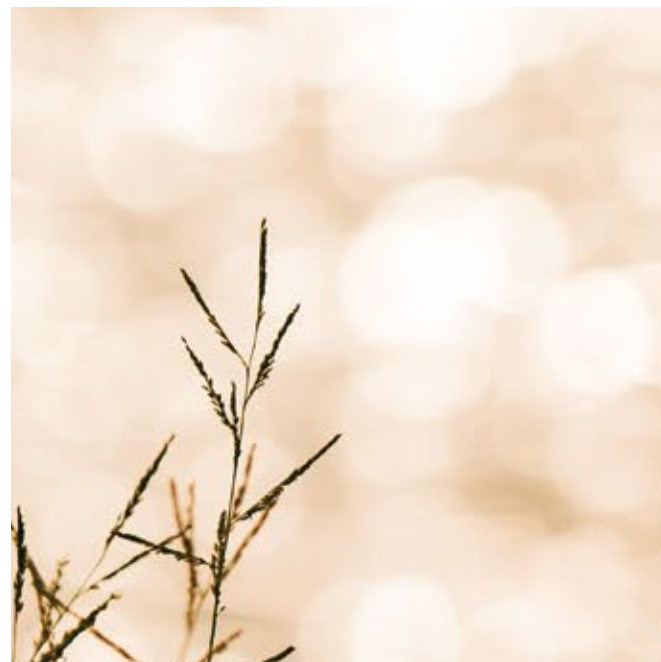
\*All images and atmospheres are simulated for illustration purposes only. Terms and conditions are as specified by the company.

## Life with Nature

The whisper of the wind, the gentle chatter of birds in the treetops— a natural symphony that soothes the soul and restores the rhythm of life.



## Life with Sunlight



More than warmth, sunlight is the quiet clock of life— passing gently through each day, awakening energy, creativity, and the promise of new beginnings.



Project name CHANN THE RIVERSIDE Borommaratchachonnani  
Project area Approximately 43 Rai  
Total unit 112 units

Located on Borommaratchachonnani Road, Hom Kret Subdistrict,  
Sam Phran District, Nakhon Pathom Province.

# Riverside Lifestyle Retreat



\*All images and atmospheres are simulated for illustration purposes only. Terms and conditions are as specified by the company.

# CHANN PRIVACY





TEASURE BY THE RIVER

\*All images and atmospheres are simulated for illustration purposes only. Terms and conditions are as specified by the company.



CHANN  
THE RIVERSIDE CLUB



# SERENITY

A reflection of life's quiet elegance.

# TRANQUILITY

Not just a moment of peace,  
but a sanctuary you can truly call your own.





# BALANCE

The quiet elegance of success,  
beautifully reflected.



# CHANN

THE RIVERSIDE  
BOROMMARATCHACHONNANI

IVY

318 SQ.M.

\*All images and atmospheres are simulated for illustration purposes only. Terms and conditions are as specified by the company.

1<sup>ST</sup> FLOOR



2<sup>ND</sup> FLOOR





# CHANN

— THE RIVERSIDE —  
BOROMMARATCHACHONNANI

## SHADOW

389 SQ.M.

\*All images and atmospheres are simulated for illustration purposes only. Terms and conditions are as specified by the company.

1<sup>ST</sup> FLOOR



2<sup>ND</sup> FLOOR



**SHADOW**  
389 SQ.M.

- 4 BEDROOMS
- 1 MAID ROOM

- 5 BATHROOMS
- 3 PARKINGS

\*All images and atmospheres are simulated for illustration purposes only. Terms and conditions are as specified by the company.



# CHANN

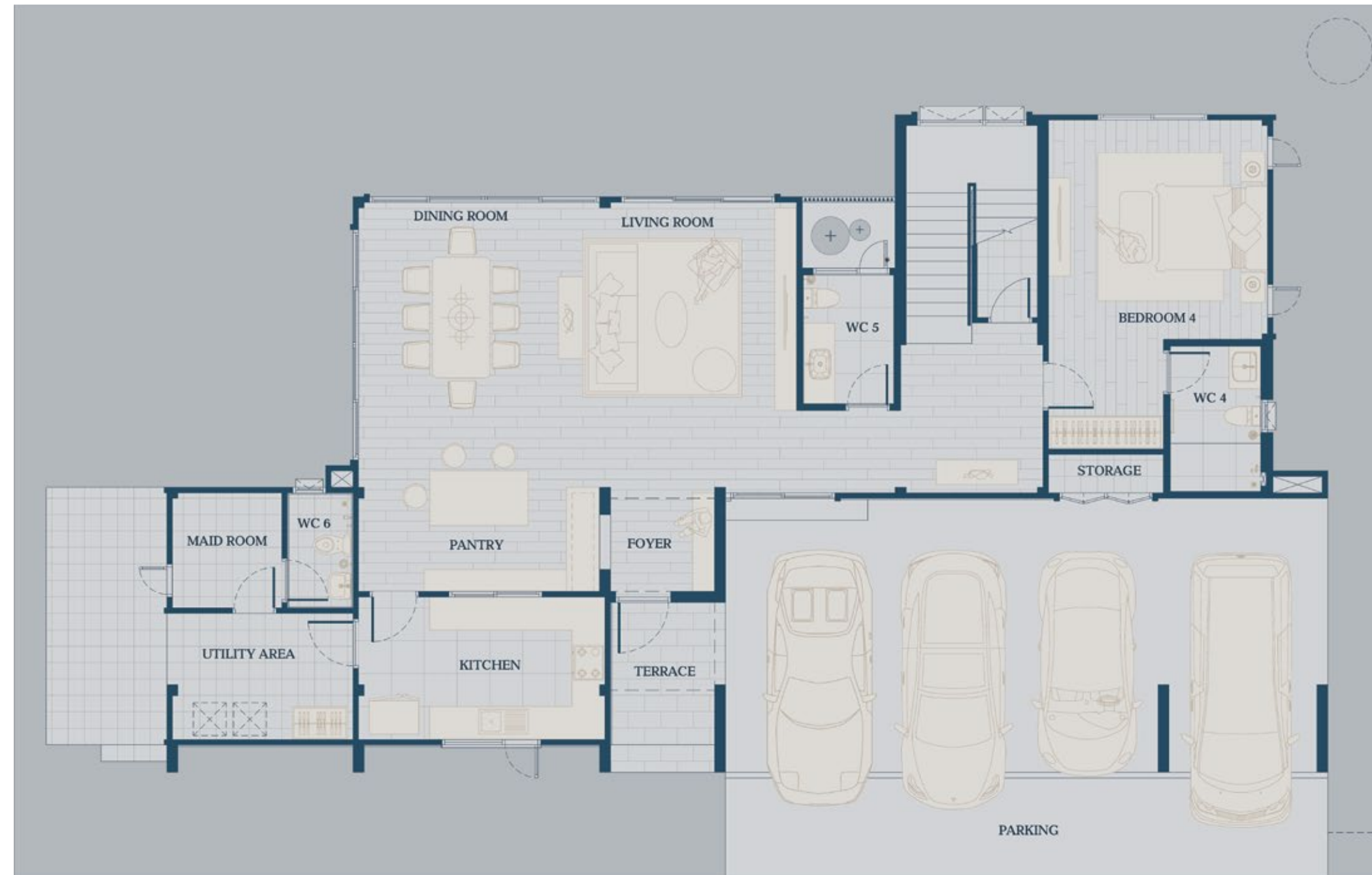
— THE RIVERSIDE —  
BOROMMARATCHACHONNANI

## WARMTH

421 SQ.M.

\*All images and atmospheres are simulated for illustration purposes only. Terms and conditions are as specified by the company.

## 1<sup>ST</sup> FLOOR



## 2<sup>ND</sup> FLOOR



**WARMTH**  
421 SQ.M.

- 4 BEDROOMS
- 5 BATHROOMS
- 1 MAID ROOM
- 4 PARKINGS

\*All images and atmospheres are simulated for illustration purposes only. Terms and conditions are as specified by the company.



# CHANN

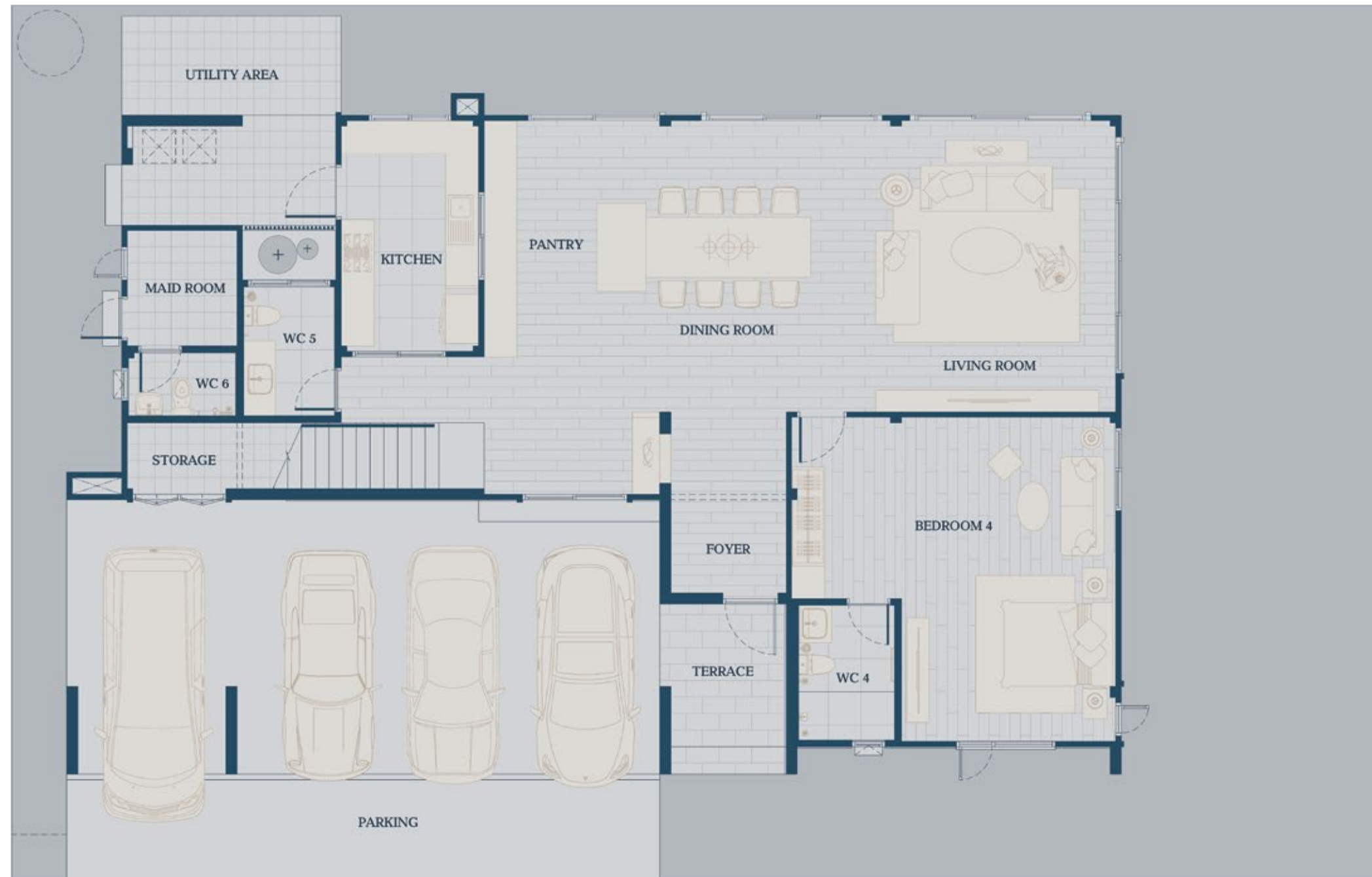
THE RIVERSIDE  
BOROMMARATCHACHONNANI

## CHANN

433 SQ.M.

\*All images and atmospheres are simulated for illustration purposes only. Terms and conditions are as specified by the company.

## 1<sup>ST</sup> FLOOR



## 2<sup>ND</sup> FLOOR



**CHANN**  
433 SQ.M.

◦ 4 BEDROOMS  
◦ 1 MAID ROOM

◦ 5 BATHROOMS  
◦ 4 PARKINGS

assetwise.co.th | ASSETwise

02 168 0000



Project Owner: Synergy Estate Co., Ltd. Company Registration No. 0105557135544 Head Office: 9 Soi Ram Inthra 5 Yaek 23, Anusawari Subdistrict, Bang Khen District, Bangkok 10220 Registered Capital: 50,000,000 THB [Fully Paid] Chief Executive Officer: Mr. Kromchet Vipanpong  
Project Name: CHAN The Riverside Borommaratchachonnani Land Title Deed Nos.: 95, 97, 8917, 44629, 44630, 44631 Total Area: Approximately 43 Rai, 2 Ngan, 94.6 Square Wah Location: Moo 4, Borommaratchachonnani road, Hom Kret Subdistrict, Sam Phran District, Nakhon Pathom Province  
The land is mortgaged with Bank of Ayudhya Public Company Limited. Land Allocation License No.: [Application in Progress] Construction Commencement Date: April 1, 2023 Estimated Completion of Common Areas: December 31, 2027 The project comprises 112 two-storey single houses.  
All images shown are simulated and for illustrative purposes only. The company reserves the right to change project details, prices, and interior decorations as deemed appropriate without prior notice. For more information, please contact: [www.assetwise.co.th](http://www.assetwise.co.th) or Call Center 02-168-0000  
Open daily from 09:00 AM - 06:00 PM